

Dimplex Convecter Heaters

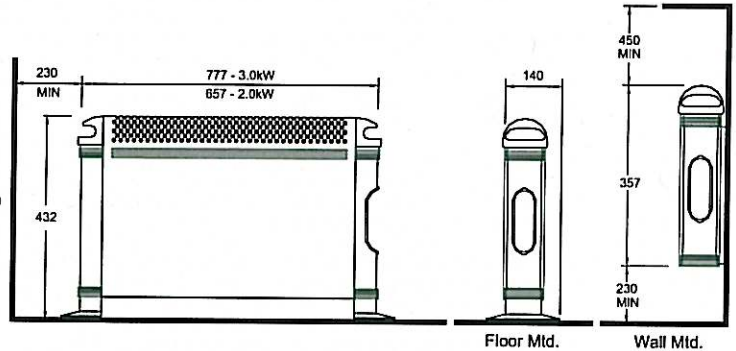
Models : 3082S, 3087S, 3087ST and 3088T



INDCUK308R Issue 9

Dimensions (millimetres)

Models	Specification
3082S	2.0kw Heat Switch / Thermostat / Neon / 24hr Timer
3087S	3.0kw Heat Switch / Thermostat / Neon / 24hr Timer
3087ST	3.0kw On/Off Switch / Thermostat / Neon / 24hr Timer / Turbo
3088T	3.0kw Heat Switch / Thermostat / Neon / Turbo



IMPORTANT : THESE INSTRUCTIONS SHOULD BE READ CAREFULLY AND RETAINED FOR FUTURE REFERENCE

Important Safety Advice

WARNING – THIS APPLIANCE MUST NOT BE USED IN A BATHROOM.
WARNING - DO NOT USE THIS HEATER IN THE IMMEDIATE SURROUNDINGS OF A BATH, A SHOWER OR A SWIMMING POOL.
WARNING – THIS HEATER MUST NOT BE LOCATED IMMEDIATELY BELOW A FIXED SOCKET OUTLET.
DO NOT USE THE HEATER UNTIL THE FEET OR WALL BRACKETS ARE FITTED CORRECTLY.

FOLLOW these instructions carefully.

NEVER cover or obstruct in any way the heat outlet slots at the top of the heater or the air inlet slots in the base of the heater.

The heater carries a warning 'DO NOT COVER' to alert the user to the risk of fire that exists if the heater is accidentally covered.

Timer models 3082S, 3087S and 3087ST can be set to switch on automatically. Remember to observe all safety warnings at all times.

Caution: In order to avoid a hazard due to inadvertent resetting of the thermal cutout, this appliance must not be supplied through an external switching device, such as a timer, or connected to a circuit that is regularly switched on and off by the utility.

This appliance is not intended for use by children or other persons without assistance or supervision if their physical, sensory or mental capabilities prevent them from using it safely. Children should be supervised to ensure that they do not play with the appliance.

If young children, the aged or infirm are likely to be left in the vicinity of the heater, we advise that adequate precautions should be taken. We recommend that a guard be fitted to ensure contact with the heater is avoided and objects cannot be inserted into the product.

If the mains lead is damaged, it must be replaced by the manufacturer or its service agent or a similarly qualified person in order to avoid a hazard.

For further information, please contact our guard supplier direct on Tel. No. 01603 667957, or in case of difficulty or for further advice contact the Customer Helpline.

Electrical connection

WARNING – THIS APPLIANCE MUST BE EARTHED

This heater must be used on an ~ supply only and the voltage marked on the heater must correspond to the supply voltage. This heater is fitted with a rewirable plug incorporating a 13 amp fuse. In the event of replacing the fuse in the plug supplied, a 13 amp fuse approved by ASTA to BS 1362 must be used. If any other type of plug is used, a 15 amp fuse must be fitted in the plug, the adaptor, or at the distribution board.

IMPORTANT : If the plug is not suitable for your socket, the 13 amp plug should be removed. Before wiring the appropriate plug, please note that

the wires in this mains lead are coloured in accordance with the following code :

GREEN AND YELLOW: EARTH
BLUE : NEUTRAL
BROWN: LIVE

Connect the **GREEN AND YELLOW** wire to the terminal marked 'E' or by the earth symbol , or coloured **GREEN** or **GREEN AND YELLOW**.

Connect the **BROWN** wire to the terminal marked 'L' or coloured **RED**.
 Connect the **BLUE** wire to the terminal marked 'N' or coloured **BLACK**.

Wall Mounting

Three identical wall mounting brackets are secured to the base of the heater with a fixing screw. To wall mount appliance, first remove the brackets as follows :

Lay the heater on its back.

Following the sequence in **Fig. 1** – identify and remove the fixing screw securing the brackets located beside Mains Cable as shown in (a), then pull out brackets and rotate them to disengage them from the slot (b). Withdraw the brackets from the slot (c).

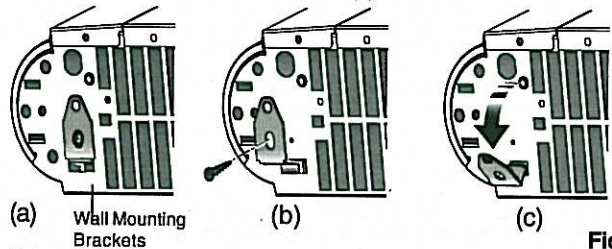


Fig. 1

Select a suitable position on a wall, near to a mains power socket, making sure that there is **at least 230 mm** below the heater and **at least 450 mm** above the heater of unobstructed space. See also 'Positioning the heater'. Fix the two top retaining brackets to the wall, using suitable fixings, for 2kW models at 358mm centres and 3kW models at 478mm centres – see **Fig. 2**.

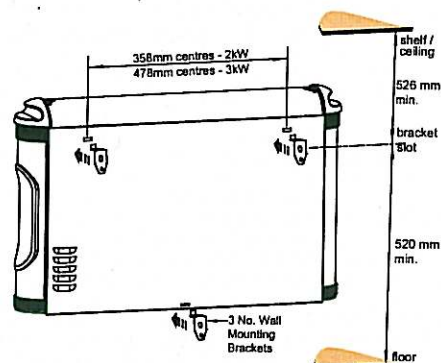


Fig. 2

Locate the heater on the top brackets and allow it to hang in place.
 Fit the bottom bracket into the slot in the heater and then fix it to the wall.
 Test that the heater is now securely fixed to the wall.

Positioning the heater

Always ensure that the heater is stood on a firm, level base near to, but not directly beneath, a suitable mains supply socket. Ensure that curtains and furniture are not positioned close to the chosen position, as this would create a potential fire hazard. We recommend that the heater should be wall-mounted in rooms where children may be left unattended. See also 'Important Safety Advice'.

Free standing use

NEVER USE THE HEATER FREE STANDING WITHOUT THE FEET FITTED.

Lay the heater on its back, and locate the foot fixing screw (see 'a' in Fig. 3). Remove the screw using an X-head screwdriver, then align foot over slots and holes in base (see 'b' in Fig. 3) and push into slots until the foot clips into place. Finally take the foot fixing screw, insert and tighten using a screwdriver to secure the foot.

NOTE – The wall mounting brackets indicated in Fig. 3 can be left secured to the base if they are not required.

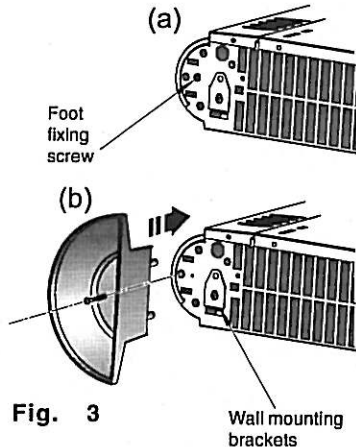


Fig. 3

Using the heater

Plug in and switch on at the wall socket.

On models with a timer clock, the clock will operate all the time that the heater is connected to the mains supply, regardless of the setting of the heat selector switch. Set the timer control switch as required for OFF, Manual or Automatic operation – see 'Timer Operations'.

The heat output is controlled by the thermostat – see 'Thermostat'.

Please note – the element has been coated with a protective film which will burn off during the first few minutes of use and may cause a small amount of fuming. This is quite normal – the fumes are non-toxic and will quickly disappear.

We recommend that you open a window to ventilate the room when using the heater for the first time.

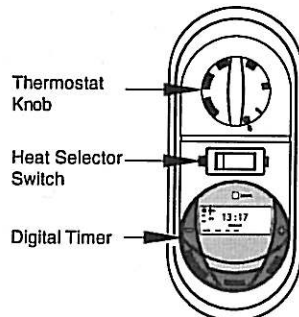


Fig. 4 - Model 3087ST controls shown

Controls

Thermostat

The thermostat controls the heat output according to the room temperature. This ensures that the heater will not produce heat unnecessarily when the room is warm.

To set the temperature you require, turn the thermostat knob clockwise until the desired temperature is reached. Alternatively to heat a cold room quickly, turn the thermostat knob up fully.

When the room has reached the desired temperature, turn the thermostat knob anti-clockwise until the thermostat just clicks off.

The heater will now automatically operate at this temperature.

The thermostat also has a frost protection setting marked '*'. This setting is useful in areas such as garages to prevent frost damage. If the thermostat is set to its minimum setting '*', the heater will cycle ON and OFF to maintain a temperature of approximately 5°C to help protect against frosty conditions.

Heat Selector Switch

Heat selection is available on both models as an economy feature.

On model 3088T - the switch is a 4 position switch with an Off position marked 'O' and 3 possible heat settings as follows :

- I & II - The heater operates with low heat output
- III - The heater operates with max. heat output

On model 3088T - the switch is a 4 position switch with an Off position marked 'O' and 3 possible heat settings as follows :

- I - The heater operates with 1kW output
- II - The heater operates with 2kW output
- III - The heater operates with full 3kW output

ON/OFF Switch

On model 3087ST – the switch operates as follows :

- I - The heater is off
- II - The heater operates with 2kW output

Note : The above description of the On/Off switch operation is with the turbo neon switch in the off position – see also 'Model 3087ST' in the 'Turbo Fan Models ..' section.

Digital Timer Operation - see Fig. 5

IMPORTANT: Remember to observe all safety warnings when operating the heater on auto setting, either attended or unattended.

The timer allows you to select 'AUTO' or 'MAN ON' by pressing the 'MODE' button until the required MODE appears at the bottom of the timer display. 'AUTO' MODE allows the heater to switch ON and OFF according to a set 24 Hour program period (see 'Setting Programs' section below).

'MAN ON' MODE allows power to the heater uninterrupted by the program settings.

Key Lock:

If 'ENTER' and 'MODE' are pressed within 1 second, the keys will be locked. The user will know the keys are locked as the lock symbol '🔒' will be displayed on the top left hand corner of the screen. To unlock the keypad, press 'ENTER' and then 'MODE' within 1 second.

Initial Operation

For initial use, plug the heater into a regular household power point and turn the power on. The timer is now ready to be set up for use.



Fig. 5

Setting Current Time

1. Press the 'PROGRAM' button ONCE. The clock symbol ⌚ appears on the top left hand side of the screen. The user can now set the clock.
2. The hour digit will flash. To adjust the hour use the '-' & '+' buttons. Confirm the hour digit by pressing 'ENTER'.
3. Once 'ENTER' has been pressed the minutes will flash. To adjust the minutes use the '-' & '+' buttons. Confirm the minute digit by pressing 'ENTER'.
4. The timer now returns to the default display.
5. To reset incorrect time, repeat previous steps.

Once the correct time is set, a total of four ON/OFF time programs can be set for operation. There are two program options.

Setting Programmes

Press the 'PROGRAM' key twice to set the programs.

You are now setting the programs starting with P1 'ON'.

SETTING P1 ON TIME:

1. To set the hour use the '-' & '+' buttons. Confirm the hour digit by pressing 'ENTER'.
2. To set the minutes use the '-' & '+' buttons. Confirm the minute digit by pressing 'ENTER'.

Note: The minutes can only be set in 10 minute blocks in programme 'MODE'.

SETTING P1 OFF TIME:

3. To set the hour use the '-' & '+' buttons. Confirm the hour digit by pressing 'ENTER'.
4. To set the minutes use the '-' & '+' buttons. Confirm the minute digit by pressing 'ENTER'.

Repeat steps 1 to 4 to programme P2, P3 & P4. After programming P4 'OFF' you automatically exit to the default display.

At any time while programming the timer you can press the 'PROGRAM' button to exit to the default display.

The Advance Function

When in 'AUTO' MODE, if the '+' button is pressed for longer than 2 seconds the programme will ADVANCE to the next setting programmed and will only revert back to the program when the subsequent programme time is reached. When the 'ADVANCE' function is running the 'ADVANCE' segment will be displayed on the LCD screen. If the '-' button is pressed when the 'ADVANCE' programme is running the 'ADVANCE' feature will be automatically cancelled and the programme will run as normal.

Note - Timer Memory Back Up Batteries - Once the heater has been left plugged in with the socket switched on for at least 72 hours the timer's memory back up batteries will be fully charged.

Once the timer batteries are fully charged, if there is a power cut or if the heater is disconnected from the mains for less than six months, then the timer will continue to keep time & the settings in the memory will remain intact.

Mechanical Timer Operation - see Fig. 6

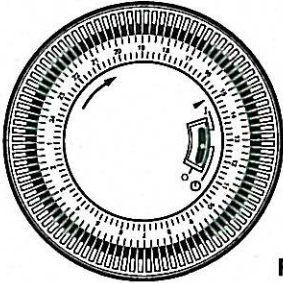


Fig. 6

Set the I - 0 - O slide switch on the timer (Fig. 7) to :

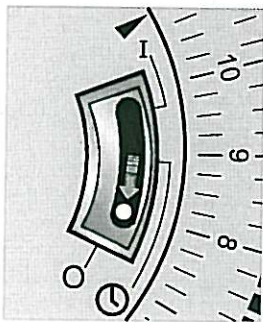


Fig. 7

Position 0 - Heating Off

Position I - Manual operation

This setting allows power to the heater uninterrupted by the timer settings. The heat selector switch will control the output (see 'Controls').

Position O - 'Auto' operation

DO NOT disconnect this heater from the mains supply unless it is being taken out of use (e.g. in summer or for storage), otherwise the timer clock will stop.

Setting the time of day

To set the time of day, rotate the timer dial clockwise (indicated by the arrow) until the correct time of day is opposite the reference mark (see Fig. 7). The 24-hour clock is used ; e.g. time shown for 4 pm is '16' (16:00hrs).

Setting the 'Auto' ON and OFF times

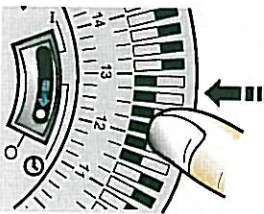


Fig. 8

To set the timer :

1. Using your finger tip or the tip of a pencil, push in as many segments as necessary around the dial, according to the times you don't require heat - see Fig. 8. Each segment pushed in switches the heater OFF for that part of the hour. All other segments will be ON. For example, Fig. 9 shows the timer set to switch the heater ON between 9.00am and 4.00pm and between 9.30pm and 7.00am.

2. You can select as many ON periods as you like, within the 24-hour day. The settings will repeat every day until changed.
3. To change ON and OFF times, simply push in any 'ON' segments you wish to cancel and pull out new 'ON' segments as required.

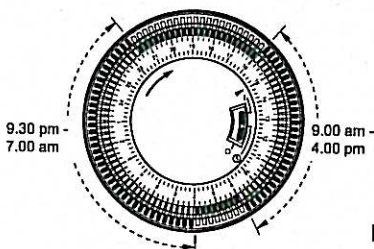


Fig. 9

Switching to auto

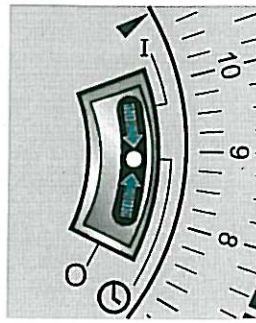


Fig. 10

Set the heat selector and thermostat for the heat output required.

Check that the clock shows the correct time of day. Set the I - 0 - O slide switch to 0 (see Fig. 10) - the heater will switch ON and OFF according to the timer settings (see Fig. 9).

IMPORTANT NOTES

Remember to observe all safety warnings when operating the heater on auto setting unattended or attended .

If the mains supply to the heater is interrupted, the timer clock will stop until power is restored ; reset the time of day to ensure correct ON and OFF times.

Turbo Fan models - see Fig. 11

(3087ST & 3088T)

The turbo fan can be used to circulate the heat around the room to help it reach the desired temperature more quickly.

On all turbo models with the heat selector switch at max. setting (3kw operation) the fan automatically switches on to override the operation of the Turbo On/Off neon switch. This permanent operation of the fan at maximum heat setting ensures more efficient operation and heat circulation around the room.



Fig. 11

Turbo ON/OFF Neon Switch

Model 3088T

On this model you can choose to use the fan to help circulate the heat at lower heat settings by switching the Turbo switch on with the heat selection switch at setting I or II .

In warm weather you can also use the fan on these models to circulate cool air as follows: Set the heat selector switch to it's off position - 'O' , set the Turbo switch to it's on position and set the thermostat to it's maximum setting by turning the thermostat knob fully clockwise.

Model 3087ST

This model operates as follows:

When the I / II switch is at position I and the turbo switch is in it's Off position (Neon Off) there is NO heat output from the convector.

When the I / II switch is at position I and the turbo switch is in it's On position (Neon On) there is 1KW output from the convector.

When the I / II switch is at position II and the turbo switch is in it's Off position (Neon Off) there is 2KW output from the convector.

When the I / II switch is at position II and the turbo switch is in it's On position (Neon On) there is 3KW output from the convector.

Note: there is no cold blow operation on this model and that all heat settings operate under the control of the thermostat.

Note: that on all models the fan and the neon on the Turbo switch will cycle on and off under the control of the thermostat - see 'Thermostat'.

Safety - overheat protection

For your safety, this appliance is fitted with a thermal cut-out. In the event that the product overheats, the cut-out switches the heater off automatically.

To bring the heater back into operation, remove the cause of the overheating, then unplug or turn off the electrical supply to the heater for a few minutes.

When the heater has cooled sufficiently, re-connect and switch on the heater.

Important Notes

Although this heater is manufactured to comply with the relevant safety standards, certain types of carpets could become discoloured by the temperatures under a portable heater. If you are concerned about this, we recommend that you contact the carpet manufacturer for guidance. Alternatively, either stand the heater on a suitable base to shield the carpet or wall-mount it - call our Helpline for further advice.

You may notice some parts of the element appearing to be hotter from time to time because of the variable airflow through the heater. This does not cause a safety hazard.

The heat outlet grille may become discoloured with use - this is caused by airborne pollution and is not a fault.

Recycling



For electrical products sold within the European Community.

At the end of the electrical products useful life it should not be disposed of with household waste.

Please recycle where facilities exist.

Check with your Local Authority or retailer for recycling advice in your country.

Cleaning and User Maintenance

WARNING – ALWAYS DISCONNECT FROM THE POWER SUPPLY BEFORE CLEANING THE HEATER.

Do not use detergents, abrasive cleaning powder or polish of any kind on the body of the heater.

Allow the heater to cool, then wipe with a dry cloth to remove dust and a damp cloth (not wet) to clean off stains. Be careful not to allow moisture into the heater.

After Sales Service

Your product is guaranteed for three years from the date of purchase.

Within this period, we undertake to repair or exchange this product free of charge provided it has been installed and operated in accordance with these instructions.

Your rights under this guarantee are additional to your statutory rights, which in turn are not affected by this guarantee.

Should you require after sales information or assistance with this product please go to www.dimplex.co.uk where you will find our self help guide by clicking on "After Sales" or ring our helpdesk on 0845 600 5111 (UK) or 01 842 4833 (R.O.I.) .

Spare parts are also available on the website

www.dimplex.co.uk

Please retain your receipt as proof of purchase.



The product complies with the European Safety Standards EN60335-2-30 and the European Standard Electromagnetic Compatibility (EMC) EN55014, EN60555-2 and EN60555-3. These cover the essential requirements of EEC Directives 2006/95/EC and 2004/108/EC

Dimplex UK Ltd.
Millbrook House
Grange Drive
Hedge End
Southampton
Hampshire. SO30 2DF

www.dimplex.co.uk

Republic of Ireland Tel. 01 8424833

[c] Dimplex UK Limited

All rights reserved. Material contained in this publication may not be reproduced in whole or in part, without prior permission in writing of Dimplex UK Limited.